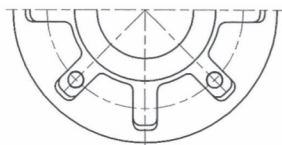
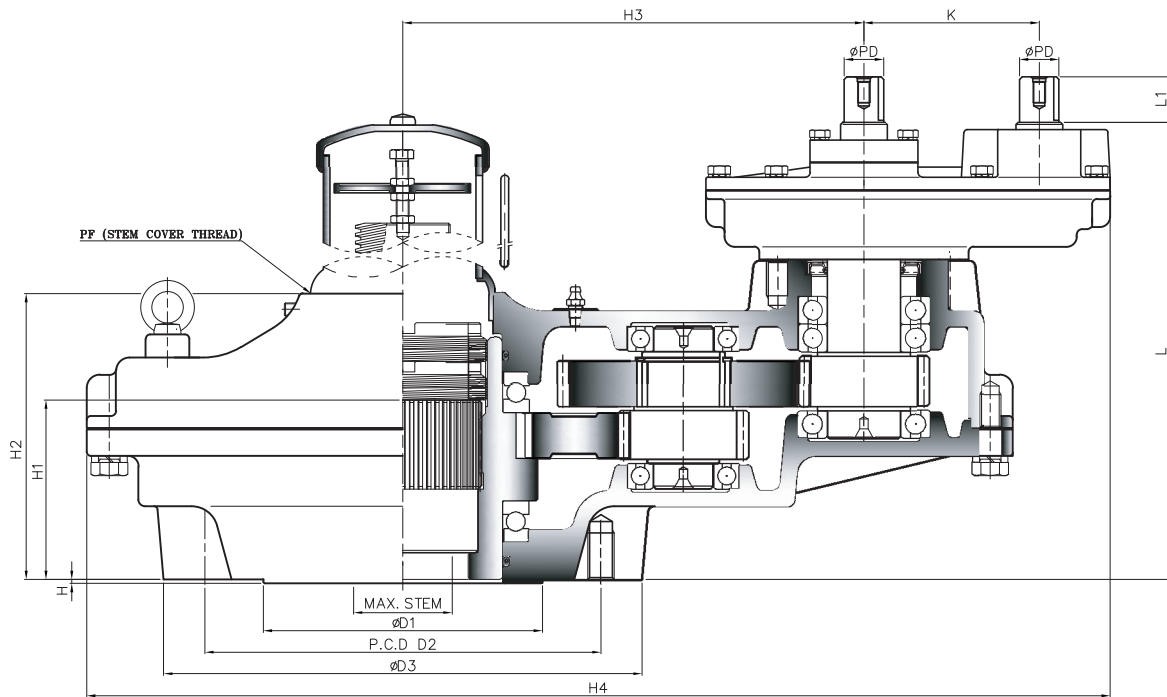
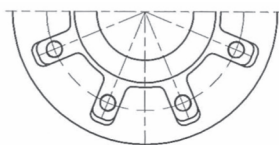


STANDARD TYPE-A Twin Shaft

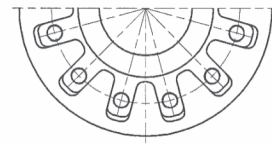
Thrust & Torque (Twin Shaft) Vertical Input with Single Reduction Gear Attachment



TYPE - A



TYPE - B



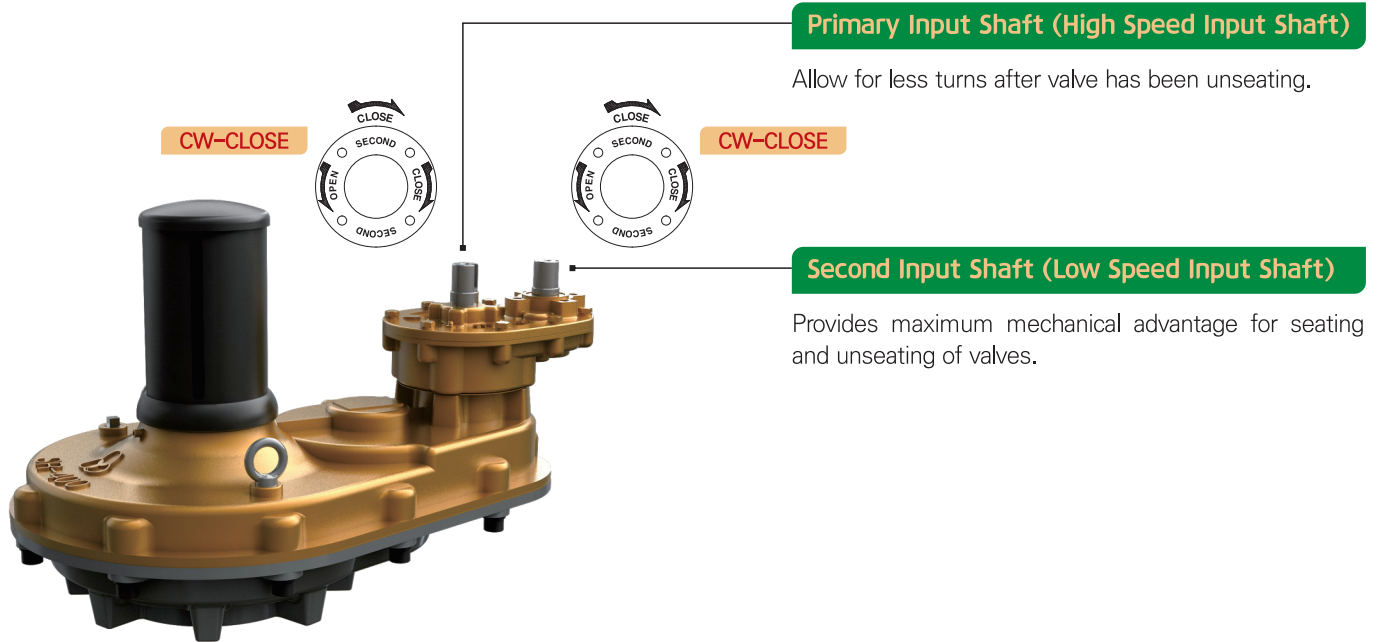
TYPE - C

Dimension

UNIT : mm

DIM MODEL	BASE PART						EXTERNAL PART						INPUT SHAFT PART			HAND WHEEL	STEM COVER					
	TYPE	FLANGE	ØD1	P.C.D		ØD3	H	H1	H2	H3	H4	K	L	L1	ØPD			KEY				
				ØD2	N-H-DP																	
SB-SR50-1ST	A	F-12	85	125	4-M12-18	150	3	63	106	161	393	79	205	34	26	8X7	200	PF2-1/2"				
SB-SR100-1ST		F-16	130	165	4-M20-30	210		87	143	191.5	453.5		238				250	PF3"				
SB-SR200-1ST	B	F-16 (F-20)	140	205	8-M16-24	250	3	91	160	230	531	93	258.5	34	26	8X7	300	PF3-1/2"				
SB-SR300-1ST		F-25	200	254	8-M16-24	300		99	168	279	615		276.5				400	PF4"				
SB-SR350-1ST		F-30	230	298	8-M20-30	319		121	196	315	705		321				500	PF5"				
SB-SR400-1ST		F-30	230	298	8-M20-30	350		133	215	346	756		121				341	34	32	10X8	500	PF6"
SB-SR500-1ST		F-35	260	356	8-M30-45	415		165	252	398	841		382				500	PF6"				
SB-SR550-1ST		F-40	300	406	8-M36-55	449		172	263	413	915		145				411	44	38	12X8	500	PF6"
SB-SR600-1ST	F-40	300	406	8-M36-55	475	182	279	437.5	987	169	455	44	38	12X8	500	PF8"						
SB-SR700-1ST	C	F-48	370	483	12-M36-55	560	5	206	309	503	1101	169	486	44	38	12X8	630	PF8"				
SB-SR750-1ST		F-48	370	483	12-M36-55	595		220	334	527	1240	230	606	58	50	16X10	710	PF10"				
SB-SR800-1ST		F-48	370	483	12-M36-55	630		233	354	559	1295	230	628	58	50	16X10	710	PF10"				

Spur Gear Actuators



Primary Input Shaft (High Speed Input Shaft)

Allow for less turns after valve has been unseating.

Second Input Shaft (Low Speed Input Shaft)

Provides maximum mechanical advantage for seating and unseating of valves.

❖ Feature

- This series suitable for use with Gate & Globe type valve. Also sluice gates and any other type requiring linear motion for thrust and torque applications.
- Unique Top Entry Replaceable Stem Nut. High Tensile Aluminum bronze material providing corrosion and abrasion resistance.
- Castings are Ductile Iron, class 65-45-12 providing high strength and impact resistance.
- Heavy duty roller bearings supporting both radial & axial thrust loads.
- Gears are Machine cut, heat treated and ground for optimum operation. Units are completely O-Ring Sealed suitable for temporary submergence to meet Ip67 class.
- Many options, such as hand wheels, stem covers are available.

❖ Selection Chart for Manual Operation

SIZE MODEL	MAX. GEAR RATIO (Changeable)		MAX. STEM ACCEPTANCE		MOUNTING OPTION & STANDARD	MAX. THRUST CAPACITY		MAX. TORQUE CAPACITY		WEIGHT
	PRIMARY	SECOND	TW	KEY		KN	lbf	N-m	Ft . lbf	Kg
SB-SR50-1ST	10 : 1	20 : 1	40	32 (10X8)	F-10, F-12	113	25400	370	273	20
SB-SR100-1ST	12 : 1	24 : 1	55	45 (14X9)	F-14, F-16	141	31700	980	723	39
SB-SR200-1ST	12 : 1	30 : 1	62	52 (16X10)	F-14, F-16, (F-20)	190	42710	1500	1106	56
SB-SR300-1ST	13 : 1	33 : 1	72	60 (18X11)	F-16, (F-20), F-25	288	64750	2500	1844	78
SB-SR350-1ST	13 : 1	39 : 1	85	72 (20X12)	F-25, F-30	350	78680	3500	2581	111
SB-SR400-1ST	14 : 1	42 : 1	98	84 (22X14)	F-25, F-30	400	89920	5200	3835	144
SB-SR500-1ST	15 : 1	45 : 1	110	95 (28X16)	F-30, F-35	510	114650	7800	5753	232
SB-SR550-1ST	15 : 1	52.5 : 1	120	105 (28X16)	F-35, F-40	1500	337210	10400	7671	293
SB-SR600-1ST	16 : 1	64 : 1	130	115 (32X18)	F-35, F-40	2310	519300	13000	9588	353
SB-SR700-1ST	17 : 1	68 : 1	150	130 (36X20)	F-40, F-48	2500	562020	17600	12981	476
SB-SR750-1ST	17 : 1	85 : 1	160	140 (36X20)	F-48	3450	775590	21000	15489	589
SB-SR800-1ST	17 : 1	85 : 1	180	160 (40X22)	F-48	4100	921700	32000	23602	702

Size and component specification in this catalogue are subject to change without prior notice for quality improvement.