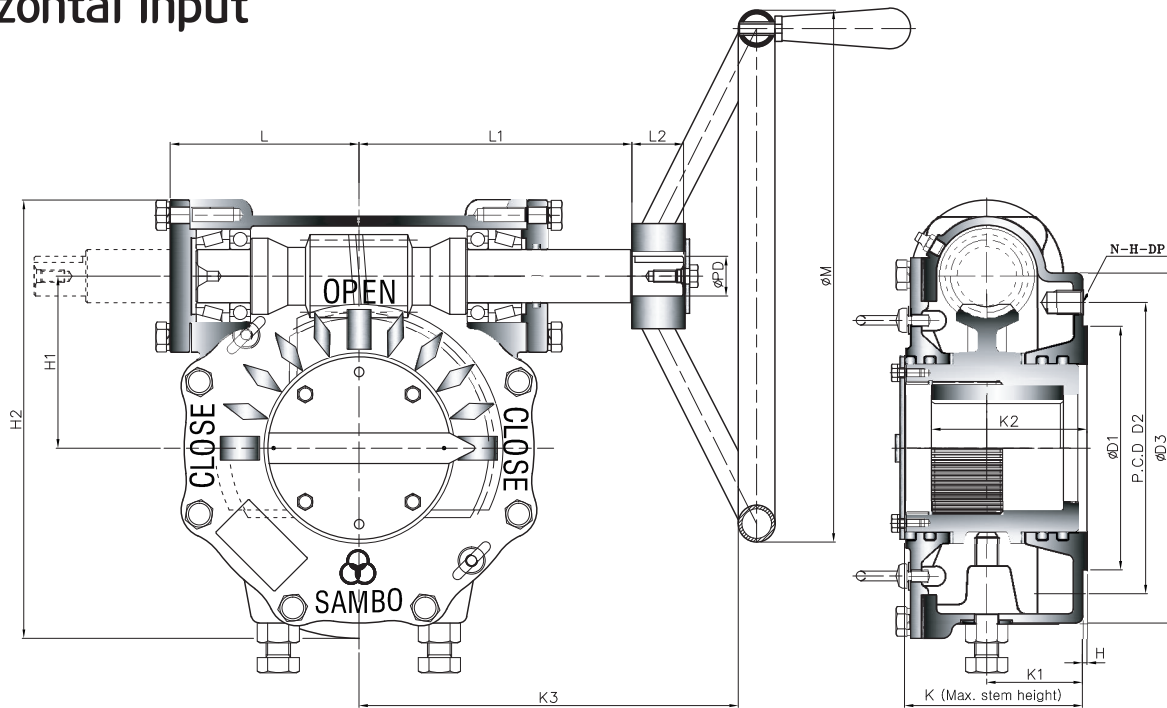
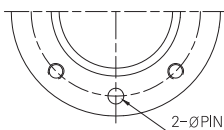


STANDARD TYPE-A

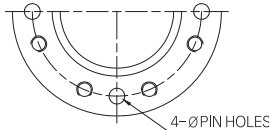
Horizontal Input



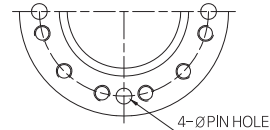
• Pin hole size is same as tap out diameter



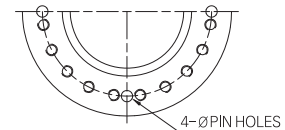
TYPE - A



TYPE - B



TYPE - C



TYPE - D

Dimension

UNIT : mm

DIM MODEL	BASE PART						EXTERNAL PART								INPUT SHAFT PART			HAND WHEEL	
	TYPE	FLANGE	ØD1	P.C.D		ØD3	H	H1	H2	K	K1	K2	K3	L	L1	L2	ØPD		KEY
				ØD2	N-H-DP														
SBWG-BF	A	F-07	55	70	4-M8-12	110	2	42	132	76	38	38.6	150	64	97	24	16	6X6	200
SBWG-0		F-10	70	102	4-M10-15	135		57	159.5	77	38	43.6	177	71.5	104.5				250
SBWG-00		F-12	85	125	4-M12-18	165		69.5	192	86.5	43	53.6	230	86	138				300
SBWG-01		F-14	100	140	4-M16-24	190		82.5	217.5	96	53	65	260	95	147				400
SBWG-02		F-16	130	165	4-M20-30	220		97	257	109.5	56	75.5	294	108	166				500
SBWG-03	B	(F-16) F-20	160	205	8-M16-24	250	3	112	287	116	59	87	324	118	176	34	26	8X7	560
SBWG-35		F-25	200	254	8-M16-24	300		127	319.5	126	63	91	329	125	181				560
SBWG-04		F-25	200	254	8-M16-24	300		153	385.5	147	73	120	370	153	207				630
SBWG-05		F-30	230	298	8-M20-30	350		180	437.5	155	78	141	400	163	217				710
SBWG-55						350		202	484.5	162	80	144	420	183	237				800
SBWG-06		F-35	260	356	8-M30-45	415		230	558.5	200	109	175	489	117	286				800
SBWG-07		F-40	300	406	8-M36-55	475		280.5	660.5	227	116	209	538	252	315				900
SBWG-75	C	F-48	370	483	12-M36-55	560	5	326	776	246	120	220	617	279	381	58	50	16X10	1000
SBWG-08					560	379		884	254	125	245	652	314	416					
SBWG-09	D	F-60	470	603	20-M36-55	700	5	448.5	1023.5	284	138	270	692	354	456	58	50	16X10	1000
SBWG-10						800		513	1191	352	164	330	814	426	614				
SBWG-11						900		616.5	1399.5	400	181	370	857	468.5	657				
SBWG-12						1000		711	1621	484	265	455	980	554	702				
SBWG-13						(F-80)		650	800	20-M42-63	1000	809	1814	546	301				

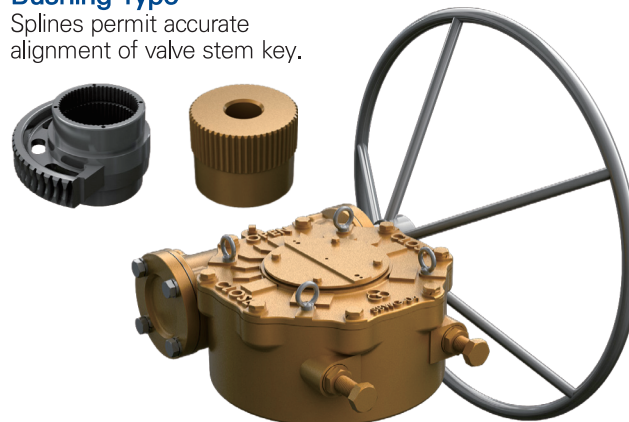
Worm Gear Actuators

❖ Feature

- All mounting bases conform to ISO 5210/1 standards.
- All castings are ductile iron, Class 65-45-12 excellent strength and impact resistance.
- Worm gear material is available in two option.
 - ▶ Ductile iron, Class 80-55-06
 - ▶ Aluminum bronze, B148-C95800
- Worm is 1045 heat treated Carbon steel.
- Removable splined bushing to permit accurate positioning between gear drive and valve stem.
- Options include hand wheels, chain and etc.

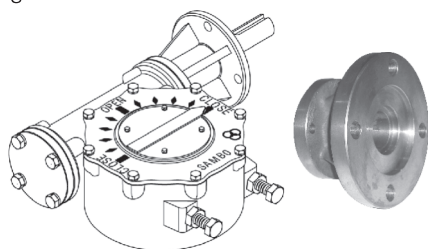
Bushing Type

Splines permit accurate alignment of valve stem key.



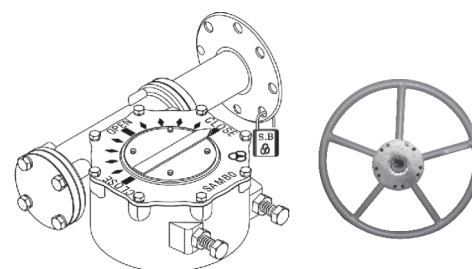
M · O · V OPTION

Worm Gear can be provided with Motor actuator input flanges to accept standard ISO Mounting Base.



LOCKING DEVICE OPTION

Input can be equipped with a Handwheel locking device for Manually operated units.



❖ Selection Chart for Manual Operation

MODEL	SIZE	GEAR RATIO	MAX. STEM ACCEPTANCE	MOUNTING OPTION & STANDARD	MAX. TORQUE CAPACITY		WEIGHT
					N-m	Ft. lbf	Kg
SBWG-BF		32 : 1	20 (6X6)	F-07	360	266	4
SBWG-0		36 : 1	28 (8X7)	F-07 , F-10	780	575	6
SBWG-00		40 : 1	36 (10X8)	F-10 , F-12	1200	885	10
SBWG-01		44 : 1	46 (14X9)	F-10 , F-12 , F-14	2000	1475	13
SBWG-02		48 : 1	60 (18X11)	F-12 , F-14 , F-16	2800	2065	21
SBWG-03		52 : 1	75 (20X12)	F-14 , F-16 , (F-20)	4300	3172	29
SBWG-35		52 : 1	80 (22X14)	F-16 , (F-20) , F-25	6100	4499	33
SBWG-04		56 : 1	95 (25X14)	F-16 , (F-20) , F-25	10400	7671	56
SBWG-05		60 : 1	115 (32X18)	F-25 , F-30	15900	11727	78
SBWG-55		62 : 1	125 (32X18)	F-25 , F-30	23500	17333	97
SBWG-06		64 : 1	140 (36X20)	F-25 , F-30 , F-35	32800	24192	147
SBWG-07		68 : 1	180 (45X25)	F-30 , F-35 , F-40	51100	37689	243
SBWG-75		66 : 1	210 (50X28)	F-35 , F-40 , F-48	81500	60111	350
SBWG-08		66 : 1	250 (56X32)	F-40 , F-48	121000	89245	473
SBWG-09		66 : 1	280 (63X32)	F-48 , F-60	192500	141981	830
SBWG-10		64 : 1	320 (70X36)	F-60	275000	202830	1330
SBWG-11		68 : 1	360 (80X40)	F-60	442000	326002	2085
SBWG-12		70 : 1	400 (90X45)	F-60 , (F-80)	610000	449913	2900
SBWG-13		72 : 1	440 (100X50)	F-60 , (F-80)	970000	715435	3800

Size and component specification in this catalogue are subject to change without prior notice for quality improvement.