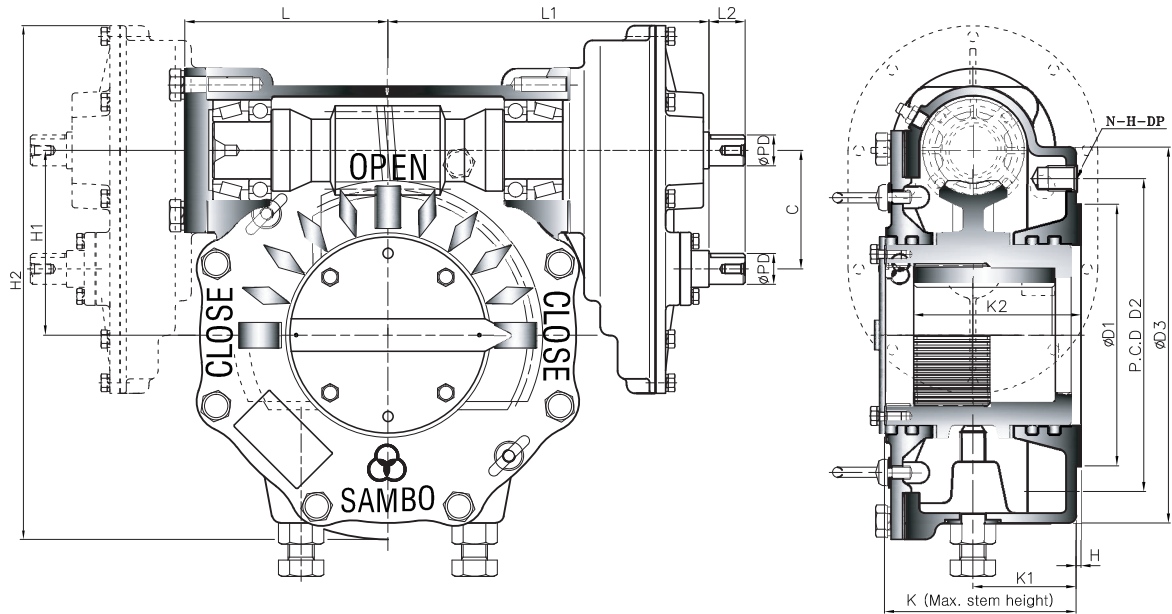
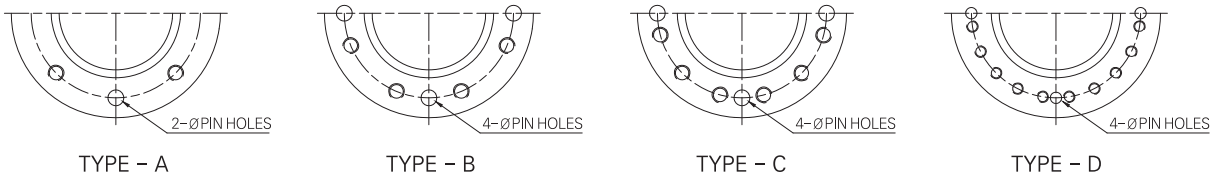


# STANDARD TYPE-A Twin Shaft

## Horizontal Input with Double Reduction Gear Attachment



• Pin hole size is same as tap out diameter



### Dimension

UNIT : mm

DIM MODEL	BASE PART							EXTERNAL PART							INPUT SHAFT PART			HAND WHEEL					
	TYPE	FLANGE	ØD1	P.C.D		ØD3	H	H1	H2	K	K1	K2	C	L	L1	L2	ØPD		KEY				
				ØD2	N-H-DP																		
SBWG-00-1SDT	A	F-12	85	125	4-M12-18	165	2	69.5	210	86.5	43	53.6	55.9	86	183	29	21	6X6	300				
SBWG-01-1SDT		F-14	100	140	4-M16-24	190		82.5	235.5	96	53	65		95	192				400				
SBWG-02-1SDT		F-16	130	165	4-M20-30	220		97	282	109.5	56	75.5		68.6	108				214.5	34	26	8X7	500
SBWG-03-1SDT	B	(F-16) F-20	160	205	8-M16-24	250	3	112	312	116	59	87	68.6	118	224.5	34	26	8X7	560				
SBWG-35-1SDT		F-25	200	254	8-M16-24	300		127	339.5	126	63	91		125	236.5				630				
SBWG-04-1SDT		F-25	200	254	8-M16-24	300		153	417.5	147	73	120		153	286				710				
SBWG-05-1SDT		F-30	230	298	8-M20-30	350		180	469.5	155	78	141		93.2	163				296	34	32	10X8	710
SBWG-55-1SDT			350	202	516.5	162		80	144	183	316	800											
SBWG-06-1SDT		F-35	260	356	8-M30-45	415		230	621	200	109	175		145	117				376	44	38	12X8	800
SBWG-07-1SDT		F-40	300	406	8-M36-55	475		280.5	723	227	116	209		145	252				411	44	38	12X8	900
SBWG-75-1SDT	C	F-48	370	483	12-M36-55	560	5	326	860	246	120	220	186.4	279	531	58	50	16X10	1000				
SBWG-08-1SDT						560		379	968	254	125	245		314	566								
SBWG-09-1SDT	D	F-60	470	603	20-M36-55	700	5	448.5	1107.5	284	138	270	186.4	354	606	58	50	16X10	1000				
SBWG-10-1SDT						800		513	1291	352	164	330		237.6	426					746			
SBWG-11-1SDT						900		616.5	1499.5	400	181	370			468.5					788.5			
SBWG-12-1SDT						1000		711	1751	484	265	455			554					969			
SBWG-13-1SDT		(F-80)	650	800	20-M42-63	1000		809	1944	546	301	515	298.5		609					1009			

# Worm Gear Actuators

## ❖ Feature

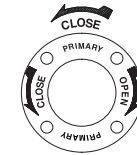
- All mounting bases conform to ISO 5210/1 standards.
- All castings are ductile iron, Class 65-45-12 excellent strength and impact resistance.
- Worm gear material is available in two option.
  - ▶ Ductile iron, Class 80-55-06
  - ▶ Aluminum bronze, B148-C95800
- Worm is 1045 heat treated Carbon steel.
- Removable splined bushing to permit accurate positioning between gear drive and valve stem.
- Options include hand wheels and etc.

### Primary Input Shaft (High Speed Input Shaft)

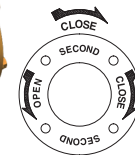
Allow for less turns after valve has been unseating.

### Second Input Shaft (Low Speed Input Shaft)

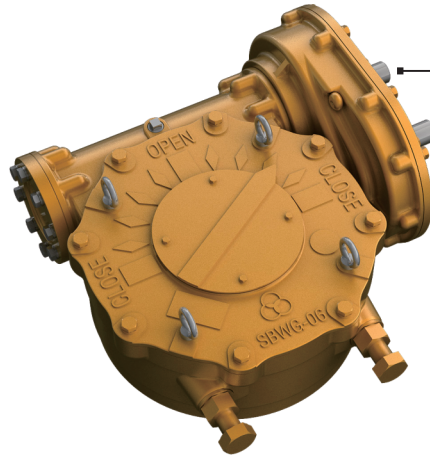
Provides maximum mechanical advantage for seating and unseating of valves.



CW-CLOSE

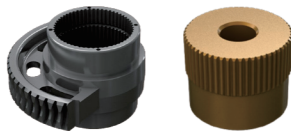


CCW-CLOSE



### Bushing Type

Splines permit accurate alignment of valve stem key.



## ❖ Selection Chart for Manual Operation

MODEL \ SIZE	GEAR RATIO		MAX. STEM ACCEPTANCE	MOUNTING OPTION & STANDARD	MAX. TORQUE CAPACITY		WEIGHT
	PRIMARY	SECOND			N-m	Ft. lbf	
SBWG-00-1SDT	80 : 1	160 : 1	36 (10X8)	F-10, F-12	1200	885	14
SBWG-01-1SDT	88 : 1	176 : 1	46 (14X9)	F-10, F-12, F-14	2000	1475	17
SBWG-02-1SDT	121.6 : 1	308 : 1	60 (18X11)	F-12, F-14, F-16	2800	2065	27
SBWG-03-1SDT	131.7 : 1	333.7 : 1	75 (20X12)	F-14, F-16, (F-20)	4300	3172	35
SBWG-35-1SDT	131.7 : 1	333.7 : 1	80 (22X14)	F-16, (F-20), F-25	6100	4499	42
SBWG-04-1SDT	168 : 1	504 : 1	95 (25X14)	F-16, (F-20), F-25	10400	7671	71
SBWG-05-1SDT	180 : 1	540 : 1	115 (32X18)	F-25, F-30	15900	11727	93
SBWG-55-1SDT	186 : 1	558 : 1	125 (32X18)	F-25, F-30	23500	17333	112
SBWG-06-1SDT	256 : 1	1024 : 1	140 (36X20)	F-25, F-30, F-35	32800	24192	188
SBWG-07-1SDT	272 : 1	1088 : 1	180 (45X25)	F-30, F-35, F-40	51100	37689	284
SBWG-75-1SDT	330 : 1	1650 : 1	210 (50X28)	F-35, F-40, F-48	81500	60111	450
SBWG-08-1SDT	330 : 1	1650 : 1	250 (56X32)	F-40, F-48	121000	89245	573
SBWG-09-1SDT	330 : 1	1650 : 1	280 (63X32)	F-48, F-60	192500	141981	930
SBWG-10-1SDT	320 : 1	1600 : 1	320 (70X36)	F-60	275000	202830	1464
SBWG-11-1SDT	340 : 1	1700 : 1	360 (80X40)	F-60	442000	326002	2220
SBWG-12-1SDT	350 : 1	1750 : 1	400 (90X45)	F-60, (F-80)	610000	449913	3081
SBWG-13-1SDT	360 : 1	1800 : 1	440 (100X50)	F-60, (F-80)	970000	715435	3980

Size and component specification in this catalogue are subject to change without prior notice for quality improvement.