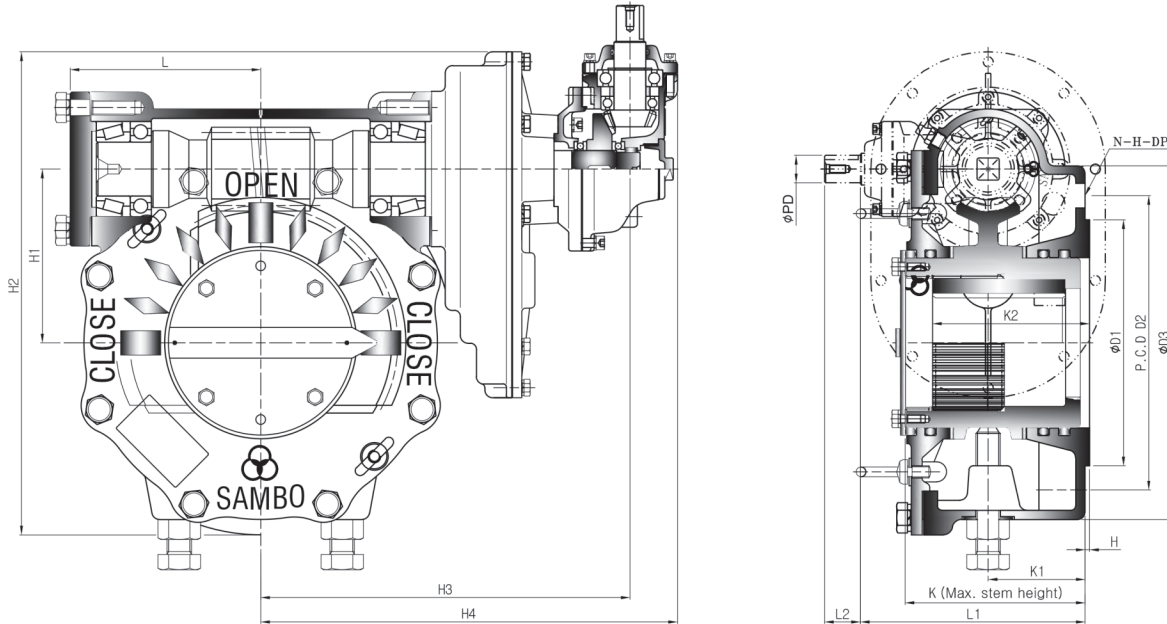
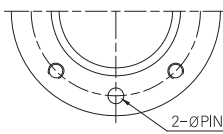


STANDARD TYPE-B

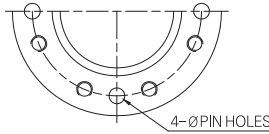
Vertical Input with Triple Reduction Gear Attachment



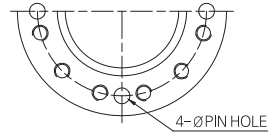
• Pin hole size is same as tap out diameter



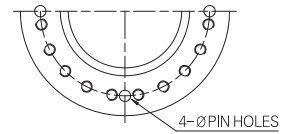
TYPE - A



TYPE - B



TYPE - C



TYPE - D

Dimension

UNIT : mm

MODEL	DIM	BASE PART						EXTERNAL PART									INPUT SHAFT PART			HAND WHEEL	
		TYPE	FLANGE	ØD1	P.C.D		ØD3	H	H1	H2	H3	H4	K	K1	K2	L	L1	L2	ØPD		KEY
					ØD2	N-H-DP															
SBWG-00-1SD2B	A	F-12	85	125	4-M12-18	165	2	69.5	210	221	261	86.5	43	53.6	86	132	34	26	8X7	250	
SBWG-01-1SD2B		F-14	100	140	4-M16-24	190		82.5	235.5	230	270	96	53	65	95	142					
SBWG-02-1SD2B		F-16	130	165	4-M20-30	220		97	282	255.5	295.5	109.5	56	75.5	108	145					
SBWG-03-1SD2B	B	(F-16) F-20	160	205	8-M16-24	250	3	112	312	265.5	305.5	116	59	87	118	148	34	26	8X7	250	
SBWG-35-1SD2B		F-25	200	254	8-M16-24	300		127	339.5	277.5	317.5	126	63	91	125	152					
SBWG-04-1SD2B		F-25	200	254	8-M16-24	300		153	417.5	344	394	147	73	120	153	194					
SBWG-05-1SD2B		F-30	230	298	8-M20-30	350		180	469.5	354	404	155	78	141	163	199					
SBWG-55-1SD2B			350	202	516.5	374		424	162	80	144	183	201								
SBWG-06-1SD2B		F-35	260	356	8-M30-45	415		230	621	438.5	488.5	200	109	175	117	240					
SBWG-07-1SD2B	F-40	300	406	8-M36-55	475	280.5	723	473.5	523.5	227	116	209	252	246							
SBWG-75-1SD2B	C	F-48	370	483	12-M36-55	560	326	860	618.5	683.5	246	120	220	279	308	34	32	10X8	630		
SBWG-08-1SD2B						560	379	968	653.5	718.5	254	125	245	314	313						
SBWG-09-1SD2B	D	F-60	470	603	20-M36-55	700	448.5	1107.5	693.5	758.5	284	138	270	354	326	34	32	10X8	630		
SBWG-10-1SD2B						800	513	1291	893	958	352	164	330	426	384.5						
SBWG-11-1SD2B						900	616.5	1499.5	935.5	1000.5	400	181	370	468.5	401.5						
SBWG-12-1SD2B						1000	711	1751	1135	1217.5	484	265	455	554	536						
SBWG-13-1SD2B						1000	809	1944	1187	1269.5	546	301	515	609	592					44	38

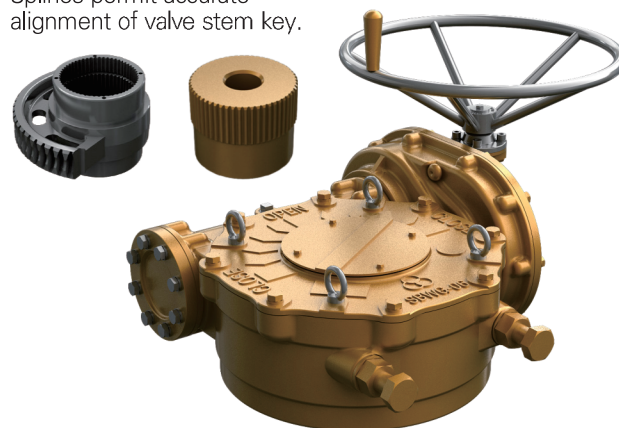
Worm Gear Actuators

❖ Feature

- All mounting bases conform to ISO 5210/1 standards.
- All castings are ductile iron, Class 65-45-12 excellent strength and impact resistance.
- Worm gear material is available in two option.
 - ▶ Ductile iron, Class 80-55-06
 - ▶ Aluminum bronze, B148-C95800
- Worm is 1045 heat treated Carbon steel.
- Removable splined bushing to permit accurate positioning between gear drive and valve stem.
- Options include hand wheels, chain wheels and etc.

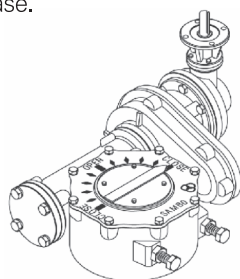
Bushing Type

Splines permit accurate alignment of valve stem key.



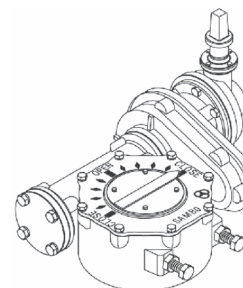
M · O · V OPTION

Worm Gear can be provided with Motor actuator input flanges to accept standard ISO Mounting Base.



SQUARE NUT OPTION

Input can be equipped with a Handwheel locking device for Manually operated units.



❖ Selection Chart for Manual Operation

MODEL	SIZE	MAX.GEAR RATIO (Change Able)	MAX. STEM ACCEPTANCE	MOUNTING OPTION & STANDARD	MAX. TORQUE CAPACITY		WEIGHT
					N-m	Ft . lbf	
SBWG-00-1SD2B		320 : 1	36 (10X8)	F-10 , F-12	1200	885	19
SBWG-01-1SD2B		352 : 1	46 (14X9)	F-10 , F-12 , F-14	2000	1475	22
SBWG-02-1SD2B		616 : 1	60 (18X11)	F-12 , F-14 , F-16	2800	2065	32
SBWG-03-1SD2B		667.4 : 1	75 (20X12)	F-14 , F-16 , (F-20)	4300	3172	40
SBWG-35-1SD2B		667.4 : 1	80 (22X14)	F-16 , (F-20) , F-25	6100	4499	57
SBWG-04-1SD2B		1260 : 1	95 (25X14)	F-16 , (F-20) , F-25	10400	7671	79
SBWG-05-1SD2B		1350 : 1	115 (32X18)	F-25 , F-30	15900	11727	101
SBWG-55-1SD2B		1395 : 1	125 (32X18)	F-25 , F-30	23500	17333	120
SBWG-06-1SD2B		3072 : 1	140 (36X20)	F-25 , F-30 , F-35	32800	24192	198
SBWG-07-1SD2B		3264 : 1	180 (45X25)	F-30 , F-35 , F-40	51100	37689	294
SBWG-75-1SD2B		6600 : 1	210 (50X28)	F-35 , F-40 , F-48	81500	60111	478
SBWG-08-1SD2B		6600 : 1	250 (56X32)	F-40 , F-48	121000	89245	602
SBWG-09-1SD2B		6600 : 1	280 (63X32)	F-48 , F-60	192500	141981	958
SBWG-10-1SD2B		8000 : 1	320 (70X36)	F-60	275000	202830	1508
SBWG-11-1SD2B		8500 : 1	360 (80X40)	F-60	442000	326002	2264
SBWG-12-1SD2B		9625 : 1	400 (90X45)	F-60 , (F-80)	610000	449913	3158
SBWG-13-1SD2B		10800 : 1	440 (100X50)	F-60 , (F-80)	970000	715435	4079

Size and component specification in this catalogue are subject to change without prior notice for quality improvement.